

Twin Creek Wind Farm and Energy Storage Project



COMMUNITY UPDATE Notification of Development Application

In planning for Australia's clean energy future, RES acknowledges its rich history. We pay our respects to the Ngadjuri Nation, the Traditional Custodians of the Country on which the Twin Creek Wind Farm and Energy Storage Project is proposed.

We recognise their ongoing connection to land and waterways and pay our respects to Elders past and present



up to 270 MW
Capacity



up to 42 TURBINES
Capacity



215 MW
Battery
Storage



206,000+ HOMES
Supplied with
electricity



Approximately 1,652
Jobs during
construction

PROJECT OVERVIEW

The proposed Twin Creek Wind Farm and Energy Storage Project is located 90 km northeast of Adelaide, in the Mid North area of South Australia, between the towns of Kapunda, Eudunda and Truro. The Project is located within three local government areas, Light Regional, Goyder Regional and Mid Murray Councils.

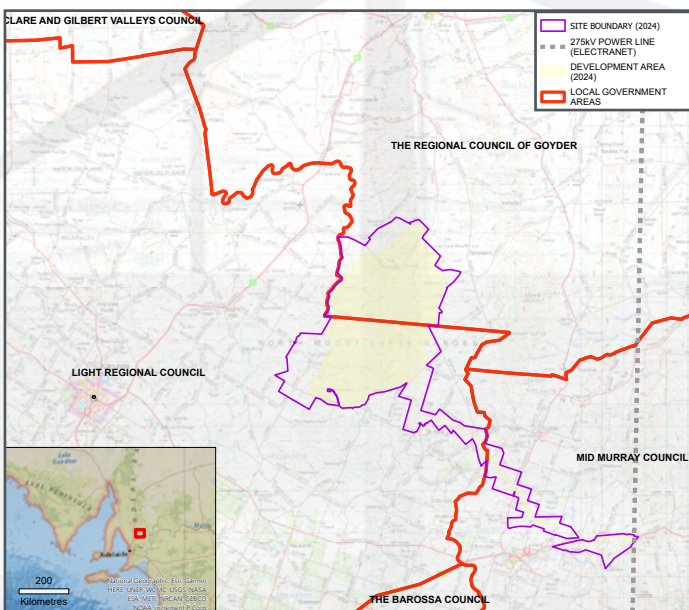
The Project includes up to 42 wind turbine generators (each with a name plate capacity of 7.2MW and a tip height of up to 220m) with an installed generating capacity of up to 270MW; battery energy storage facility of 215MW indicative capacity; transmission line; substations and other associated infrastructure.

There is an expected 30-year asset life for the development. A map of the proposed infrastructure layout is attached. Further details can be found on the Project website www.twincreek-windfarm.com

NOTIFICATION OF THE PLANNING APPLICATION

Following lodgement of the Project's Planning Application to the State Planning Commission, and the subsequent supply of further information, the Planning Application is now on public notification for a minimum of 15 business days. Members of the public are invited to make a written representation on the Project during the formal consultation period.

A Planning Application is exhibited publicly on the SA Government Planning Portal's website. You can access the Planning Application using this website link https://plan.sa.gov.au/have_your_say/notified_developments/state_developments or the QR code below.



If you have further questions once you have viewed the application, please contact us via the contact details below.

Twin Creek Wind Farm and Energy Storage Project



COMMUNITY UPDATE Notification of Development Application

DEVELOPING A SHARED BENEFITS SCHEME

RES is committed to supporting the regional communities that host our renewable energy projects. As the Development Application moves through the planning process we will be reaching out to your Local Councils, project neighbours, community groups and businesses to discuss and design a shared benefit scheme that meets community needs. Should the Project proceed through to construction, the shared benefit scheme will provide over \$15 million of direct benefits to the local community and Project neighbours during the 30+ year operating life of the wind farm.

We will also be seeking local procurement, training and employment opportunities. Employment and procurement benefits from the Project can extend through local supply chains to suppliers of fuel, vehicle servicing, catering, earth moving, construction, fencing, cleaning, equipment, tools and accommodation. Many other businesses can also benefit such as cafés, pubs, uniform suppliers and grocery stores.

During construction it is estimated that the Project will generate approximately 1652 jobs in the Lower North and Barossa Region, that is an average of 826 jobs sustained per year over two years. The Project will also support approximately 63 jobs in the region each year during operation. Estimated economic benefit to the Region during construction is \$285 million. Once operational the regional value add is estimated at \$11.2 million annually.

The Project will generate enough renewable energy to power more than 206,000 South Australian homes and offset more than 255,000 tonnes of CO2 per year, contributing to the South Australian target of 100% net renewable electricity by 2030.

Please contact us using the details below, if you or your organisation would like to discuss local community benefits.

WHO ARE WE

RES is the world's largest independent renewable energy company, active in 24 countries around the globe.

Establishing operations in Australia in 2004, RES leveraged global knowledge and talent to develop projects in the early phases of the renewable energy industry in Australia, including Taralga Wind Farm in New South Wales, Ararat Wind Farm in Victoria and Emerald Solar Farm in Queensland. More recently, RES has successfully developed Murra Warra Wind Farm in Victoria and Dulacca Wind Farm in Queensland.

RES now employs over 180 people in Australia and has offices in Sydney, Melbourne, Brisbane and multiple regional locations. RES is engaged in all technologies: wind, solar and storage and offers development, construction and asset management services across Australia.

With an industry-wide reputation for identifying innovative solutions to problems that reduce risk, cost and allow projects to progress, RES' exceptional performance was recently acknowledged with the Clean Energy Council's innovation Award 2022 and Diversity & Inclusion Award 2023, as well as the Asset Management Award 2022 at the Wind Investment Awards.



CONTACT THE TEAM

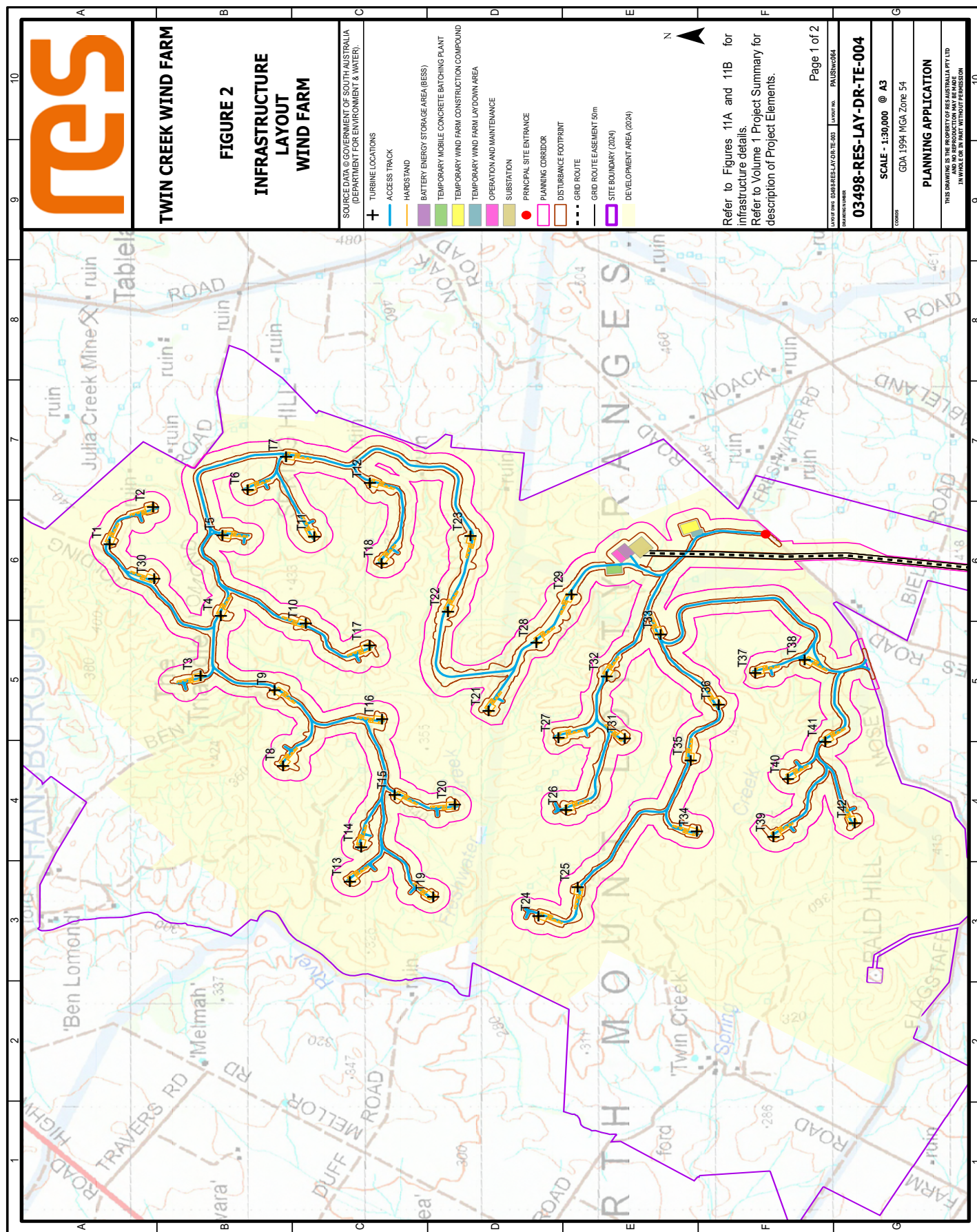
1800 118 737

www.twincreek-windfarm.com

info@twincreek-windfarm.com

Twin Creek Wind Farm and Energy Storage Project

COMMUNITY UPDATE Notification of Development Application



Twin Creek Wind Farm and Energy Storage Project

COMMUNITY UPDATE Notification of Development Application

