



TWIN CREEK WIND FARM

FIGURE 2 INFRASTRUCTURE LAYOUT WIND FARM

SOURCE DATA © GOVERNMENT OF SOUTH AUSTRALIA
(DEPARTMENT FOR ENVIRONMENT & WATER).

- TURBINE LOCATIONS
- ACCESS TRACK
- HARDSTAND
- BATTERY ENERGY STORAGE AREA (BESS)
- TEMPORARY MOBILE CONCRETE BATCHING PLANT
- TEMPORARY WIND FARM CONSTRUCTION COMPOUND
- TEMPORARY WIND FARM LAYDOWN AREA
- OPERATION AND MAINTENANCE
- SUBSTATION
- PRINCIPAL SITE ENTRANCE
- PLANNING CORRIDOR
- DISTURBANCE FOOTPRINT
- GRID ROUTE
- GRID ROUTE EASEMENT 50m
- SITE BOUNDARY (2024)
- DEVELOPMENT AREA (2024)

Refer to Figures 11A and 11B for infrastructure details.
Refer to Volume 1 Project Summary for description of Project Elements.

LAYOUT DWG 03498-RES-LAY-DR-TE-003 | LAYOUT NO. PAUSTwc064

DRAWING NUMBER

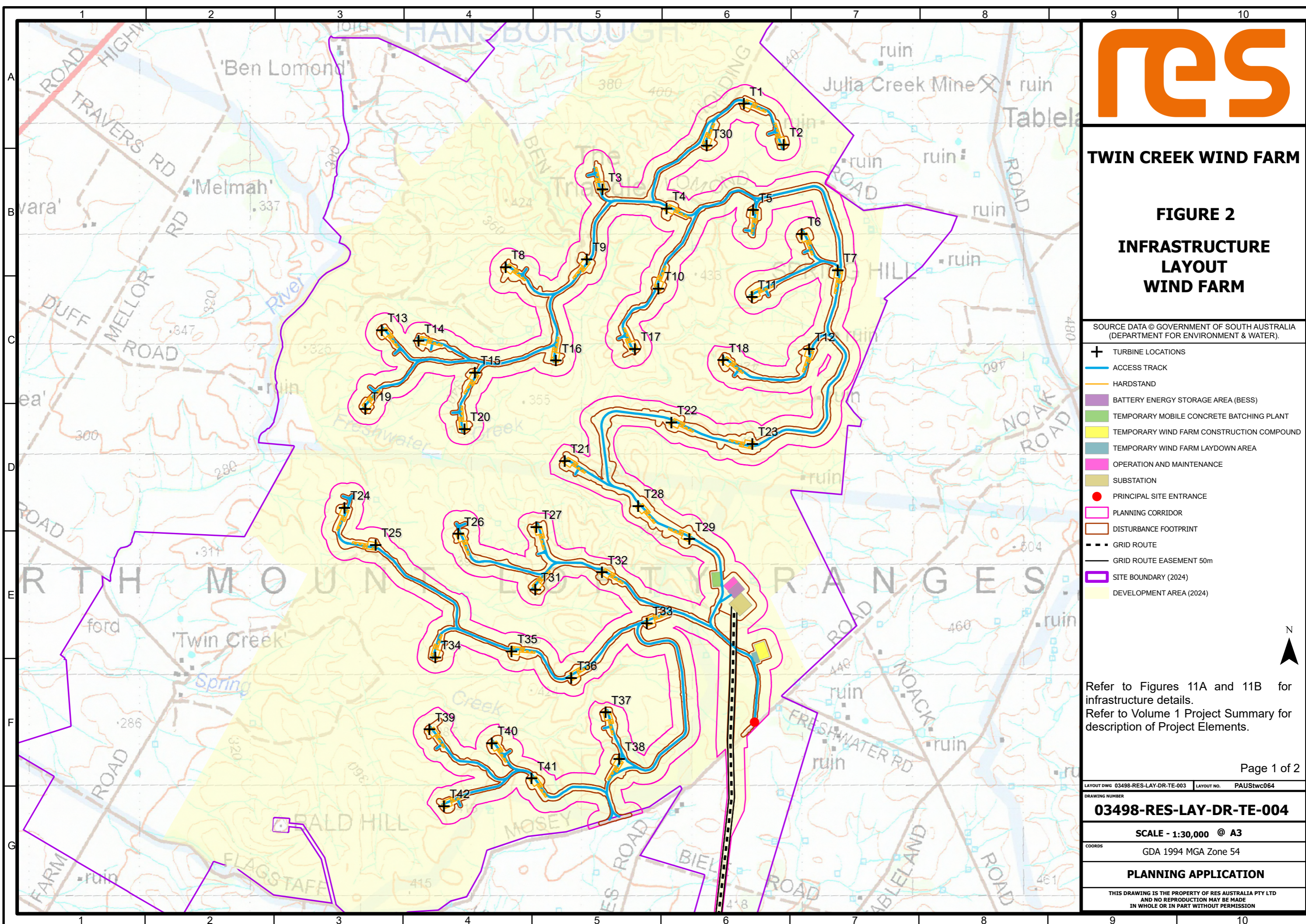
03498-RES-LAY-DR-TE-004

SCALE - 1:30,000 @ A3

COORDS
GDA 1994 MGA Zone 54

PLANNING APPLICATION

THIS DRAWING IS THE PROPERTY OF RES AUSTRALIA PTY LTD
AND NO REPRODUCTION MAY BE MADE
IN WHOLE OR IN PART WITHOUT PERMISSION





TWIN CREEK WIND FARM

FIGURE 2 INFRASTRUCTURE LAYOUT GRID ROUTE

SOURCE DATA © GOVERNMENT OF SOUTH AUSTRALIA
(DEPARTMENT FOR ENVIRONMENT & WATER).

- TURBINE LOCATIONS
- ACCESS TRACK
- HARDSTAND
- BATTERY ENERGY STORAGE AREA (BESS)
- TEMPORARY MOBILE CONCRETE BATCHING PLANT
- TEMPORARY WIND FARM CONSTRUCTION COMPOUND
- TEMPORARY WIND FARM LAYDOWN AREA
- OPERATION AND MAINTENANCE
- SUBSTATION
- PRINCIPAL SITE ENTRANCE
- PLANNING CORRIDOR
- DISTURBANCE FOOTPRINT
- GRID ROUTE
- GRID ROUTE EASEMENT 50m
- 275KV INTERFACE WORKS ZONE
- TEMPORARY CONSTRUCTION COMPOUND AND WORKS ZONE
- TERMINAL SUB-STATION
- SITE BOUNDARY (2024)
- DEVELOPMENT AREA (2024)

Refer to Figures 11A and 11B for infrastructure details.
Refer to Volume 1 Project Summary for description of Project Elements.

